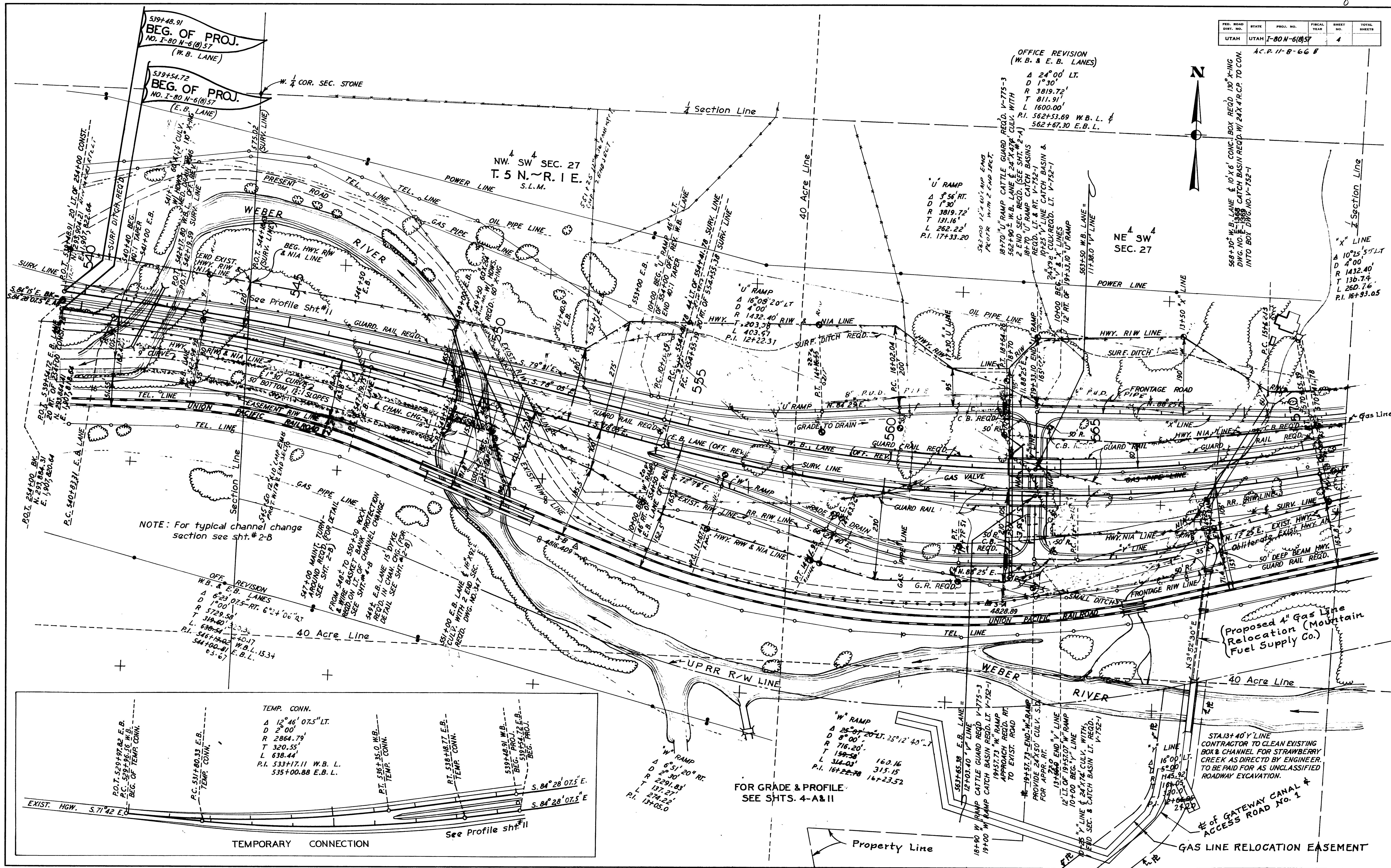


FED. ROAD DIST. NO.	STATE	PROJ. NO.	FISCAL YEAR	SHEET NO.	TOTAL SHEETS
UTAH	UTAH	I-80-N-6(8)57		4	

A.C.P. 11-B-66 B



REVISIONS	BY	DATE

NOTE: For typical channel change section see sht. # 2-B

OFF REVISION
W.B. & E.B. LANES
Δ 6°23'07.5" RT. 6°24'06" RT
D 1°00'
R 5729.58
T 319.80
L 638.54
P.I. 546+14.02 W.B.L. 15.34
547+00.91 E.B.L.
547+03.67

TEMP. CONN.
Δ 12°46'07.5" LT.
D 2°00'
R 2864.79
T 320.55
L 638.44
P.I. 533+17.11 W.B.L.
535+00.88 E.B.L.

"W" RAMP
Δ 6°51'20" RT
D 2°30'
R 2291.83
T 171.21
L 274.22
P.I. 137+05.0

FOR GRADE & PROFILE SEE SHTS. 4-A&II

"W" RAMP
Δ 25°07'20" LT. 25°12'40" LT
D 8°00'
R 716.20
T 159.58
L 314.03
P.I. 16+22.78 16+23.52

STA. 13+40' Y' LINE CONTRACTOR TO CLEAN EXISTING BOX & CHANNEL FOR STRAWBERRY CREEK AS DIRECTD BY ENGINEER. TO BE PAID FOR AS UNCLASSIFIED ROADWAY EXCAVATION.

E. OF GATEWAY CANAL & ACCESS ROAD NO. 1
GAS LINE RELOCATION EASEMENT

TEMPORARY CONNECTION

See Profile sht. #11

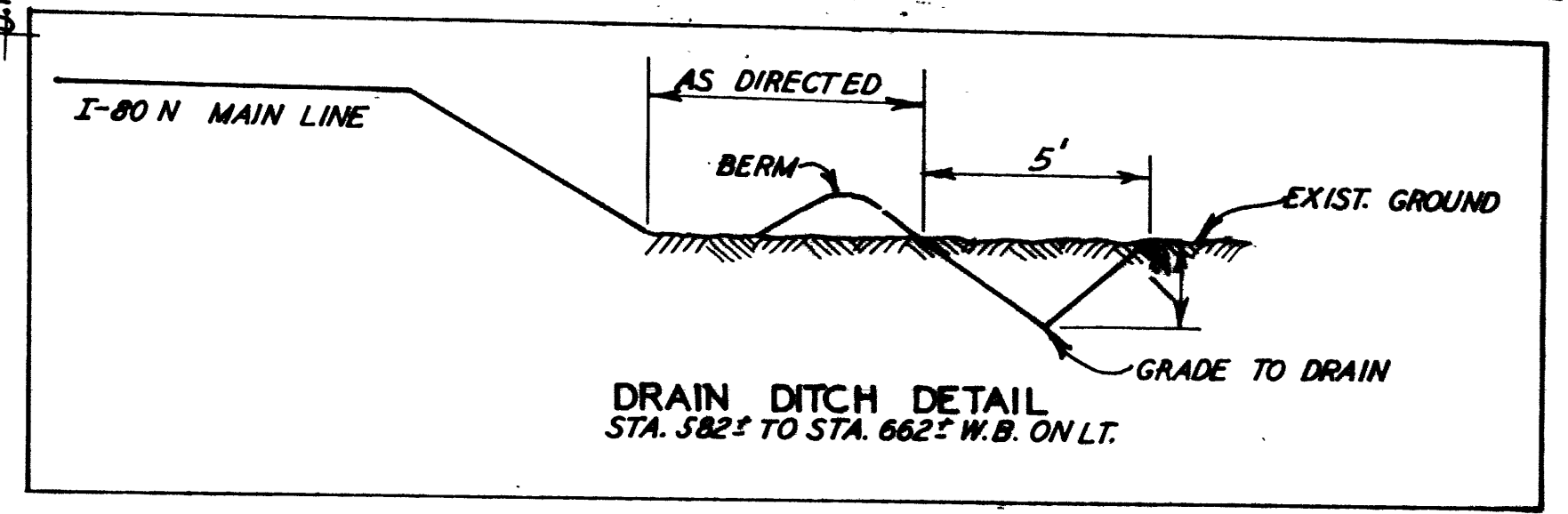
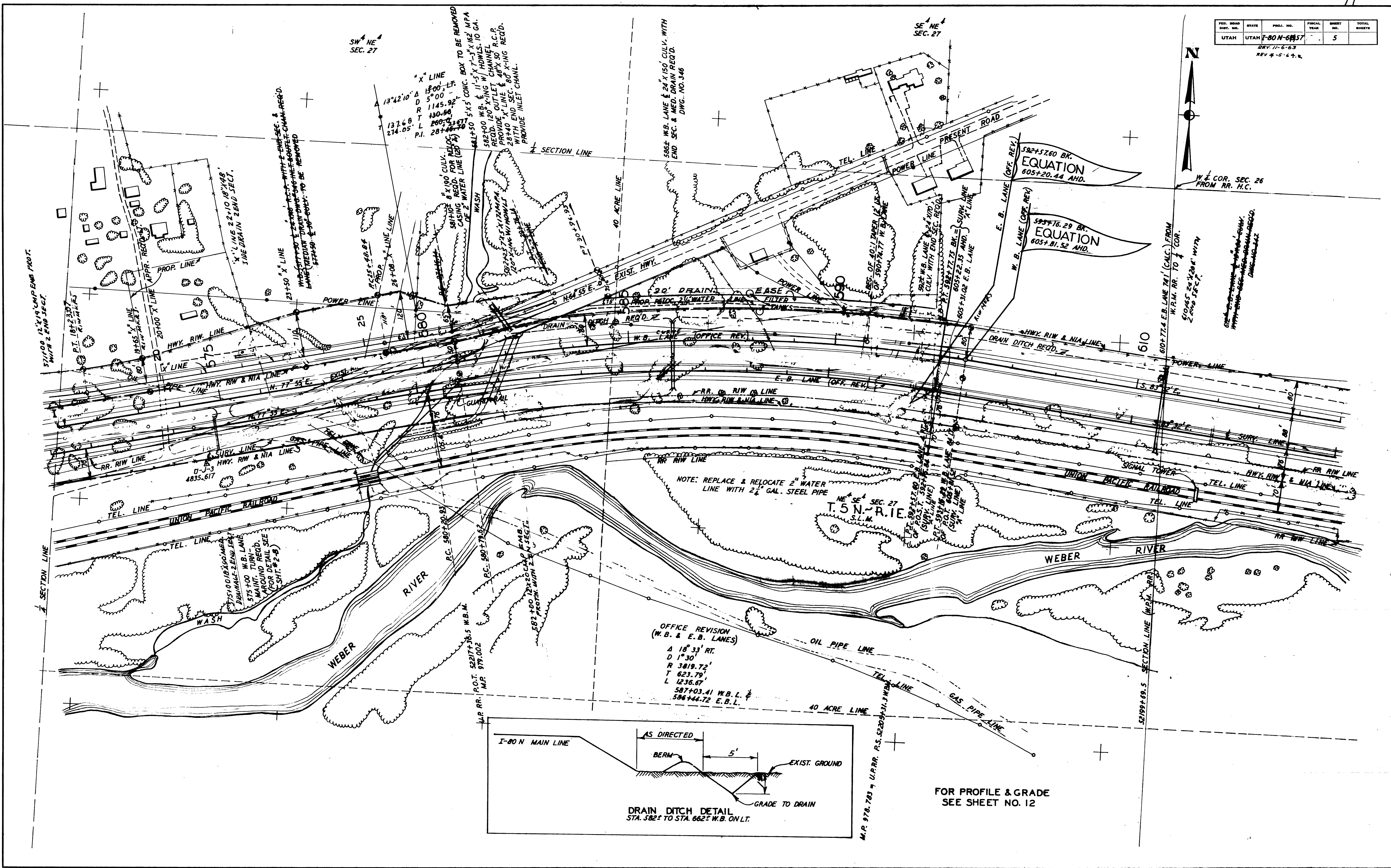
Property Line

GAS LINE RELOCATION EASEMENT

FED. ROAD DIST. NO.	STATE	PROJ. NO.	FISCAL YEAR	SHEET NO.	TOTAL SHEETS
UTAH	UTAH	F-80N-6037	REV. 11-6-63	5	

REV. 4-8-64, R.

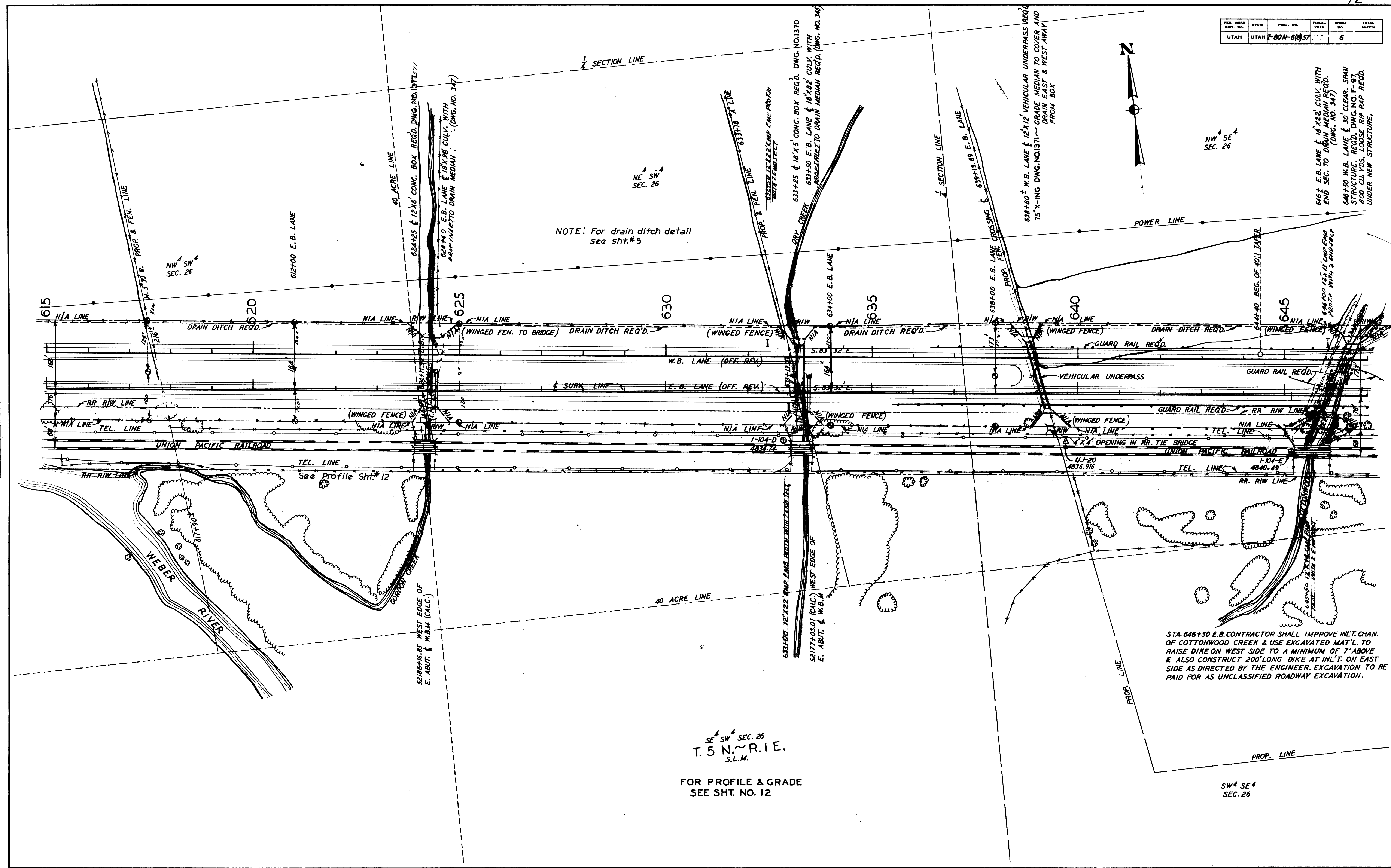
REVISIONS	DATE	BY



FOR PROFILE & GRADE SEE SHEET NO. 12

PROJ. NO.	STATE	PROJ. NO.	FISCAL YEAR	SHEET NO.	TOTAL SHEETS
UTAH	UTAH	F-80N-6(8)57		6	

REVISIONS	DATE	BY



NOTE: For drain ditch detail see sht.#5

STA. 646+50 E.B. CONTRACTOR SHALL IMPROVE INLT. CHAN. OF COTTONWOOD CREEK & USE EXCAVATED MAT'L. TO RAISE DIKE ON WEST SIDE TO A MINIMUM OF 1' ABOVE E ALSO CONSTRUCT 200' LONG DIKE AT INLT. ON EAST SIDE AS DIRECTED BY THE ENGINEER. EXCAVATION TO BE PAID FOR AS UNCLASSIFIED ROADWAY EXCAVATION.

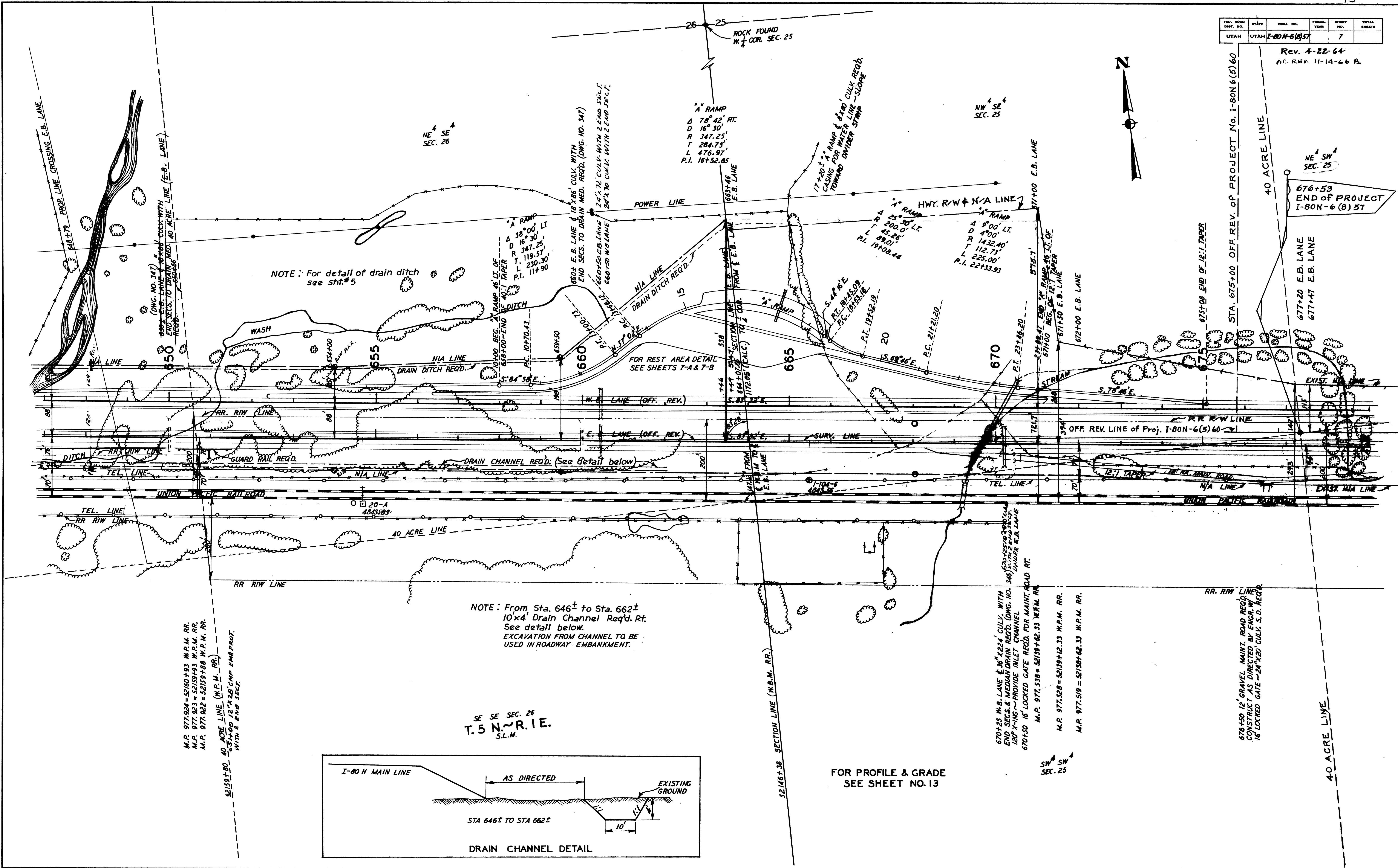
SE 1/4 SW 1/4 SEC. 26
T. 5 N. ~ R. 1 E.
S.L.M.

FOR PROFILE & GRADE
SEE SHT. NO. 12

SW 1/4 SE 1/4
SEC. 26

FED. ROAD DIST. NO.	STATE	FISCAL YEAR	SHEET NO.	TOTAL SHEETS
UTAH	UTAH	I-80N-6(8)57	7	

Rev. 4-22-64
AC. REV. 11-14-66 B.

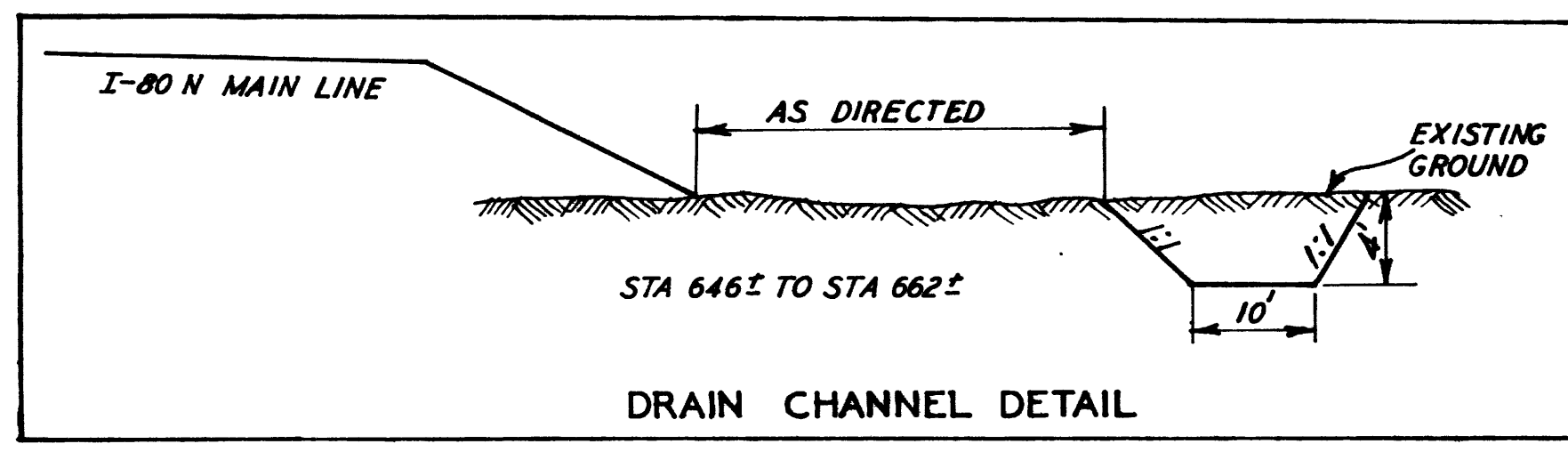


NOTE: For detail of drain ditch see sht. #5

FOR REST AREA DETAIL SEE SHEETS 7-A & 7-B

NOTE: From Sta. 646± to Sta. 662± 10x4' Drain Channel Req'd. Rt. See detail below. EXCAVATION FROM CHANNEL TO BE USED IN ROADWAY EMBANKMENT.

SE SE SEC. 26
T.5 N. R.1 E.
S.L.M.



FOR PROFILE & GRADE SEE SHEET NO. 13

REV.	DATE	BY

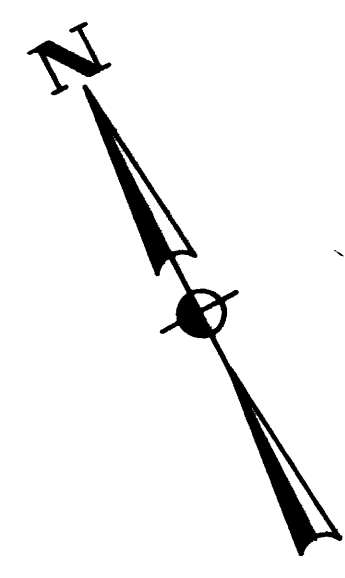
M.P. 977.924 = 52160+93 W.P.M. RR.
M.P. 977.923 = 52159+93 W.P.M. RR.
M.P. 977.922 = 52159+88 W.P.M. RR.
M.P. 977.921 = 52159+83 W.P.M. RR.
M.P. 977.920 = 52159+78 W.P.M. RR.

M.P. 977.924 = 52160+93 W.P.M. RR.
M.P. 977.923 = 52159+93 W.P.M. RR.
M.P. 977.922 = 52159+88 W.P.M. RR.
M.P. 977.921 = 52159+83 W.P.M. RR.
M.P. 977.920 = 52159+78 W.P.M. RR.
M.P. 977.919 = 52159+73 W.P.M. RR.
M.P. 977.918 = 52159+68 W.P.M. RR.

676+50 12' GRAVEL MAINT. ROAD REQ'D. CONSTRUCT AS DIRECTED BY ENGR. W/ 16' LOCKED GATE - 24' X 20' CULV. S.D. REQ'D.

FED. ROAD DIST. NO.	STATE	PROJ. NO.	FISCAL YEAR	SHEET NO.	TOTAL SHEETS
UTAH	UTAH	2-80N-6(0157)		8	

AC. REV. 11-1466 E.



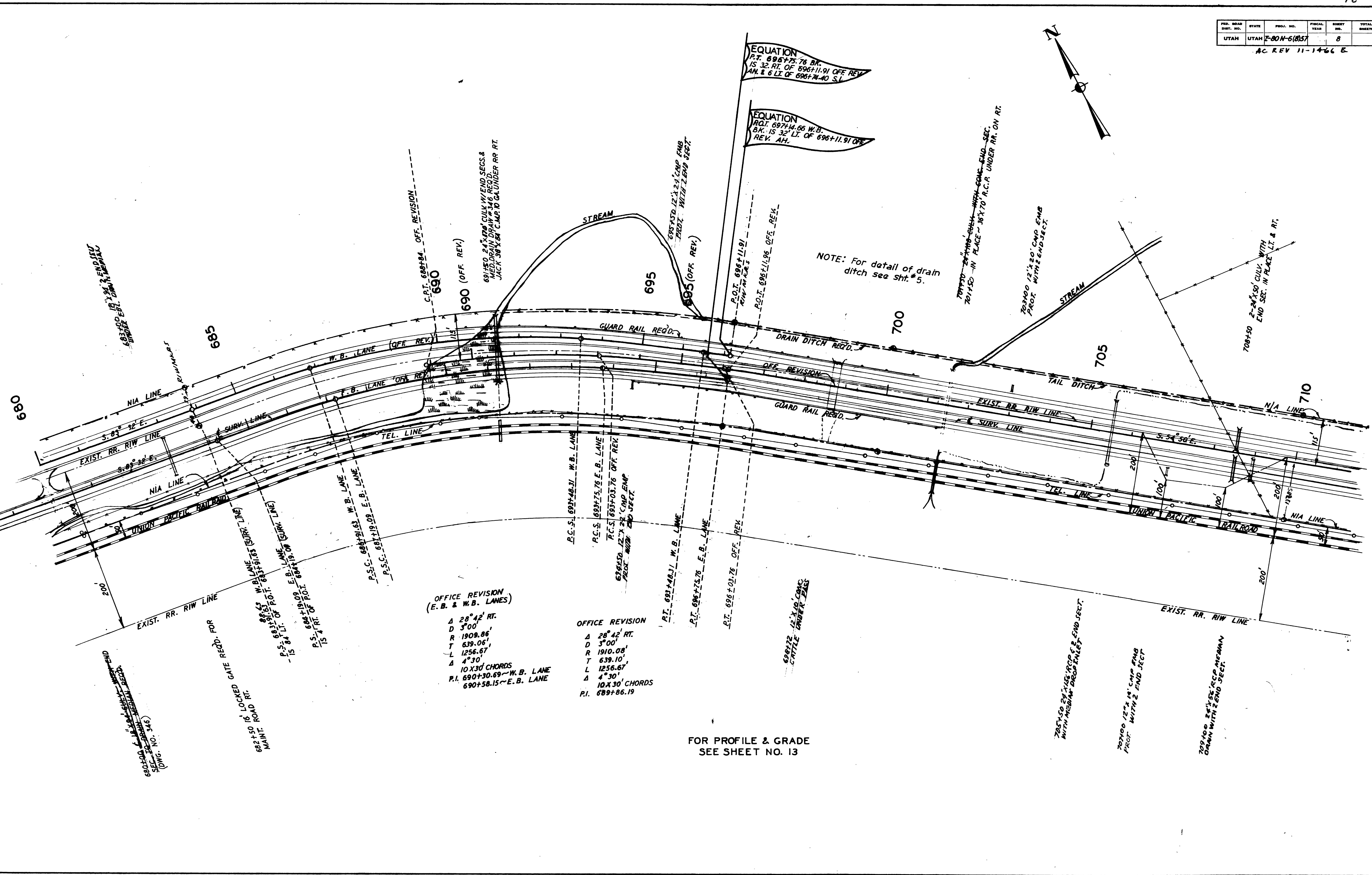
EQUATION
 P.T. 696+75.76 BR.
 IS 32' RT. OF 696+11.91 OFF REV.
 AH. & 6' LT. OF 696+74.40 S.V.

EQUATION
 P.O.T. 697+14.66 W.B.
 BK. IS 32' LT. OF 696+11.91 OFF
 REV. AH.

NOTE: For detail of drain ditch see sht. # 5.

FOR PROFILE & GRADE
 SEE SHEET NO. 13

REVISIONS	DATE	BY



OFFICE REVISION
 (E. B. & W. B. LANES)
 Δ 28° 42' RT.
 D 3° 00'
 R 1909.86'
 T 639.06'
 L 1256.67'
 Δ 4° 30'
 10 X 30' CHORDS
 P.I. 690+30.69 ~ W. B. LANE
 690+58.15 ~ E. B. LANE

OFFICE REVISION
 Δ 28° 42' RT.
 D 3° 00'
 R 1910.08'
 T 639.10'
 L 1256.67'
 Δ 4° 30'
 10 X 30' CHORDS
 P.I. 689+86.19

687+00 16' 1/2" X 3/4" END CUT
 UNDER E.B.L. ON NIA LINE

680+00 1/2" X 3/4" END CUT
 UNDER E.B.L. ON NIA LINE
 (DWG. NO. 346)

682+50 16' LOCKED GATE REQD. FOR
 MAINT.

691+50 2 1/2" X 3" CULV. W/ END SECS. &
 MEDIAN DRAIN WITH 2 END SECT.
 JACK 36" X 36" C. CAP. TO GA. UNDER RR RT.

687+50 12" X 24" C.M.P. FMB
 PROF. WITH 2 END SECT.

701+50 2 1/2" X 3" CULV. WITH CONC. END SEC.
 701+50 IN PLACE 36" X 70" R.C.P. UNDER RR. ON RT.

703+00 12" X 20" C.M.P. FMB
 PROF. WITH 2 END SECT.

708+50 2-2 1/2" X 50' CULV. WITH
 END SEC. IN PLACE LT. & RT.

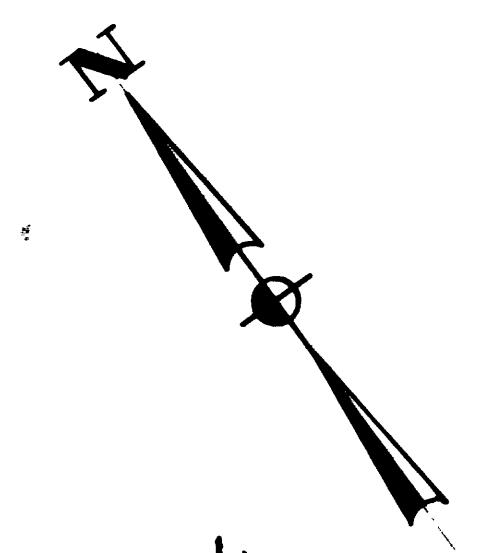
705+50 2 1/2" X 3" CULV. WITH CONC. END SEC.
 WITH MEDIAN DRAIN ENDS

706+00 12" X 24" C.M.P. FMB
 PROF. WITH 2 END SECT.

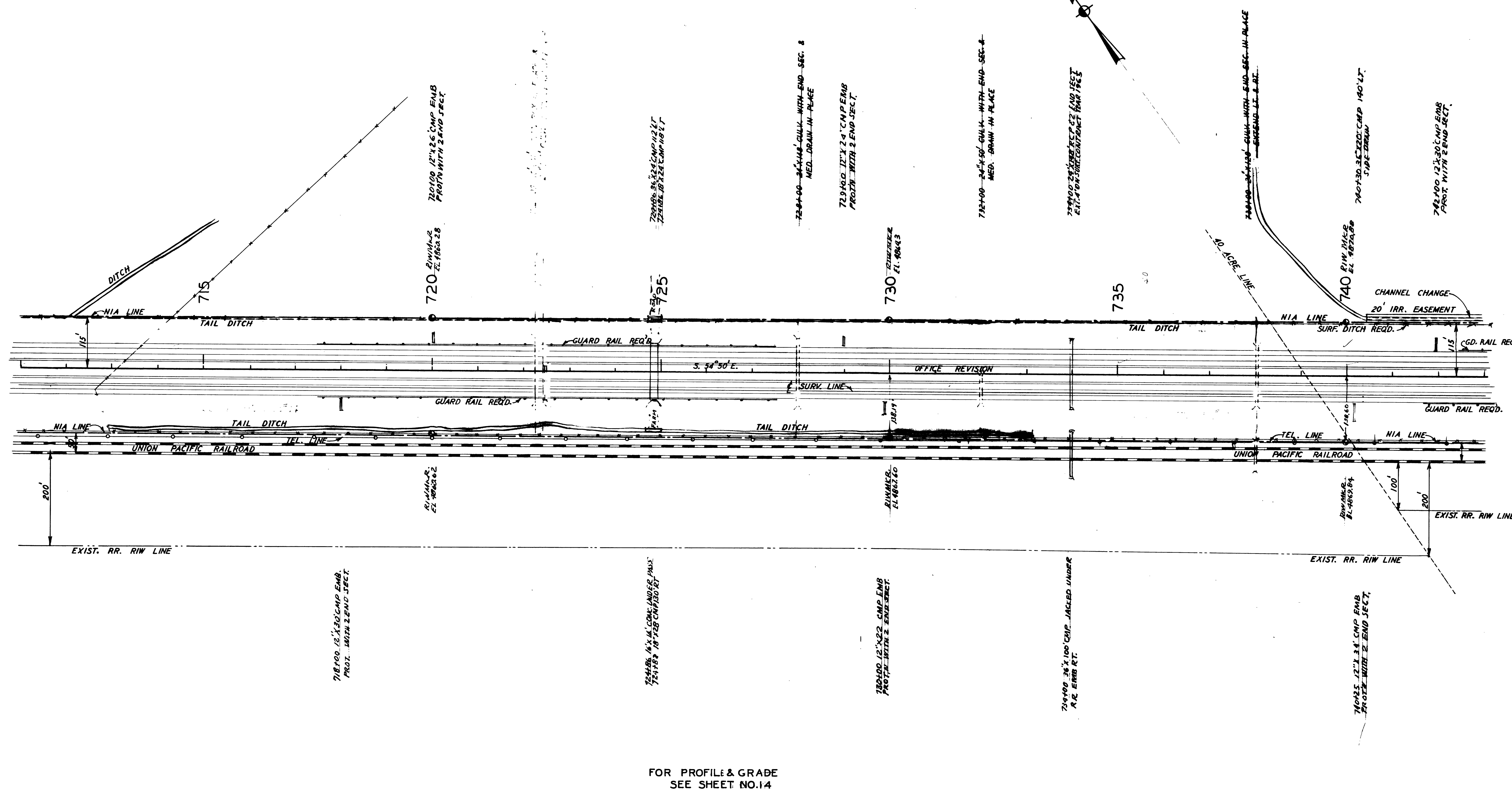
709+00 2 1/2" X 3" CULV. WITH CONC. END SEC.
 DRAIN WITH 2 END SECT.

FED. ROAD DIST. NO.	STATE	PROJ. NO.	FISCAL YEAR	SHEET NO.	TOTAL SHEETS
UTAH	UTAH	7-80N-6(10)57		9	

REV 11-14-66



REVISIONS	DATE	BY



FOR PROFILE & GRADE SEE SHEET NO. 14

FED. ROAD DIST. NO.	STATE	PROJ. NO.	FISCAL YEAR	SHEET NO.	TOTAL SHEETS
UTAH	UTAH	7-80N-6(8)57		10	

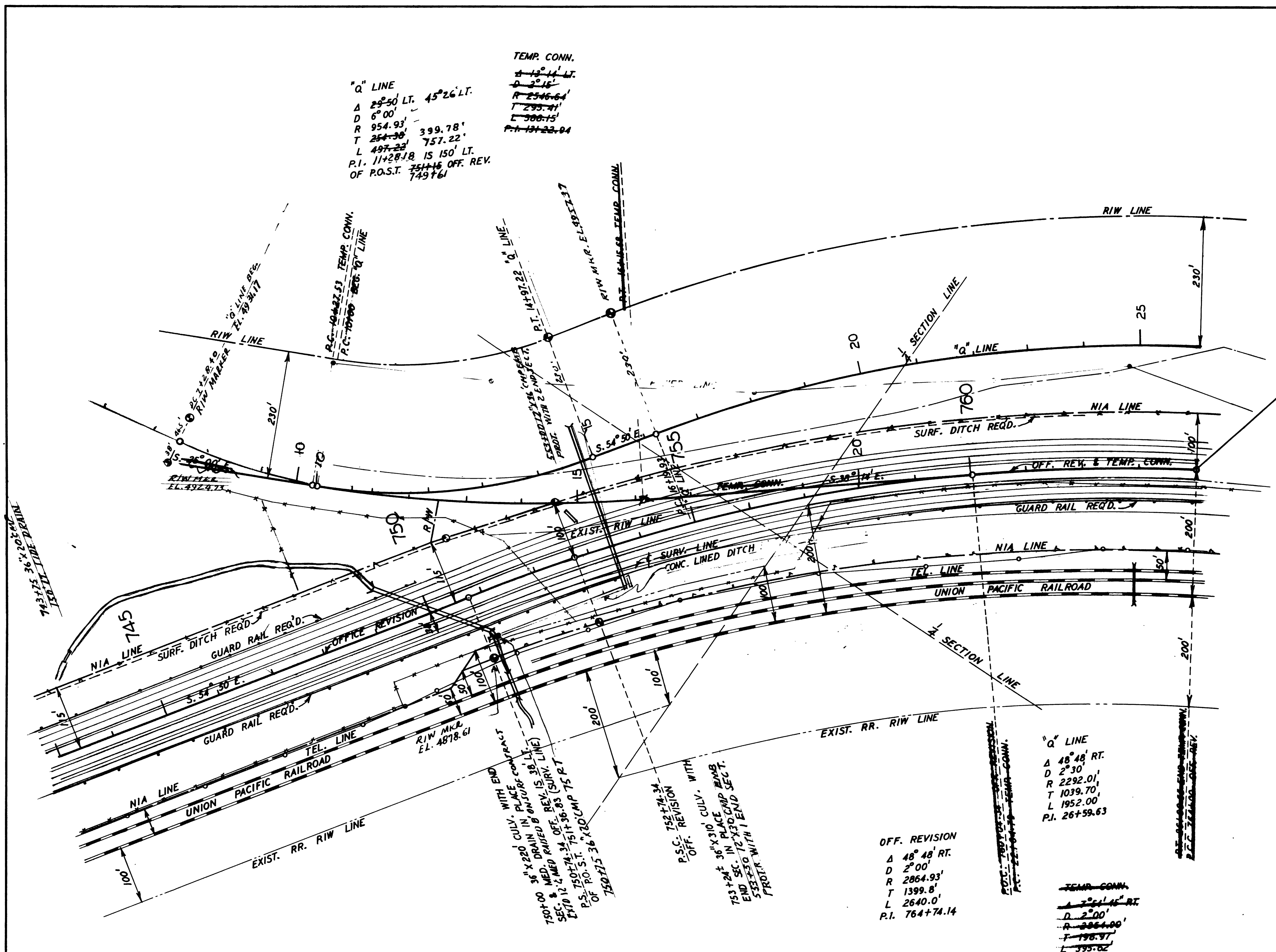
AC REV 11-15-66

TEMP. CONN.
 Δ 13° 14' LT.
 D 2° 16'
 R 2346.64'
 T 293.91'
 L 300.15'
 $P.I.$ 137+22.94

"Q" LINE
 Δ 29° 50' LT. 45° 26' LT.
 D 6° 00'
 R 954.93'
 T 254.30' 339.78'
 L 497.23' 757.22'
 $P.I.$ 114+20.18 IS 150' LT.
 OF P.O.S.T. 751+16 OFF. REV. 749+61

764+00
 END OF PROJ.
 NO. I-80N-6(8)57

REVISIONS	DATE	BY	DATE	BY



OFF. REVISION
 Δ 48° 48' RT.
 D 2° 00'
 R 2864.93'
 T 1399.8'
 L 2640.0'
 $P.I.$ 764+74.14

"Q" LINE
 Δ 48° 48' RT.
 D 2° 30'
 R 2292.01'
 T 1039.70'
 L 1952.00'
 $P.I.$ 26+59.63

TEMP. CONN.
 Δ 2° 16' RT.
 D 2° 00'
 R 2346.60'
 T 293.91'
 L 300.15'
 $P.I.$ 137+22.94

FOR PROFILE & GRADE
 SEE SHEET NO. 14